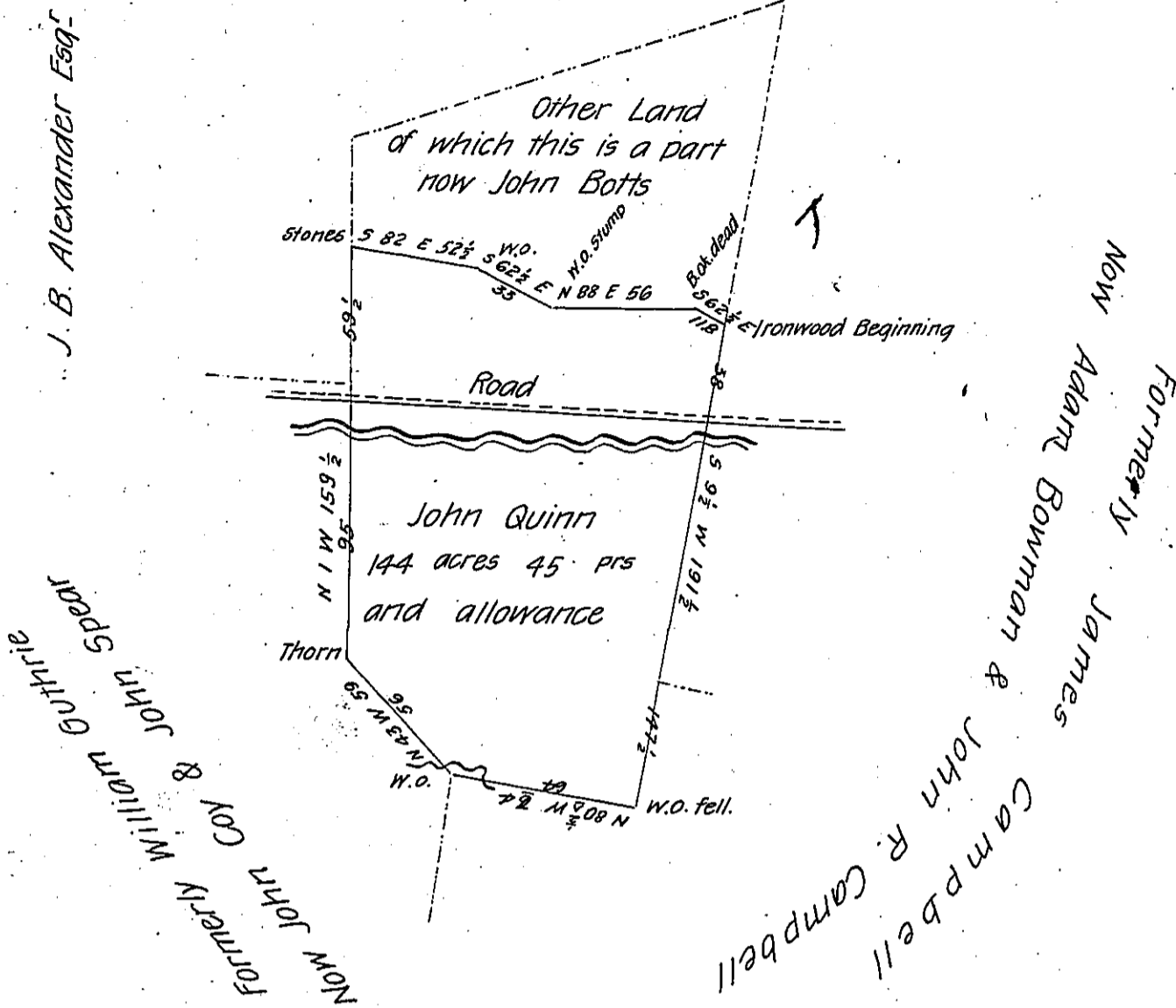


Widow McCarrey's heirs



The tract of land of which the above described is a part was surveyed in pursuance of a Warrant granted to John Quinn dated March 14th 1785. Surveyed on the 13th day of November 1828 the above part containing one hundred and forty four acres forty five perches and the allowance proportioned at six per Cent for Roads &c. Situate on the waters of Beaver Run in Washington township in the County of Westmoreland

S! Carpenter D. S.

Gabriel Hiester Esq.

Surveyor General of Penn^a

IN TESTIMONY that the above is a copy of the original remaining on file in the Department of Internal Affairs of Pennsylvania, made conformably to an Act of Assembly approved the 16th day of February, 1833, I have hereunto set my Hand and caused the Seal of said Department to be affixed at Harrisburg, this twenty third day of May 1906

Lea N. Brown
Secretary of Internal Affairs.